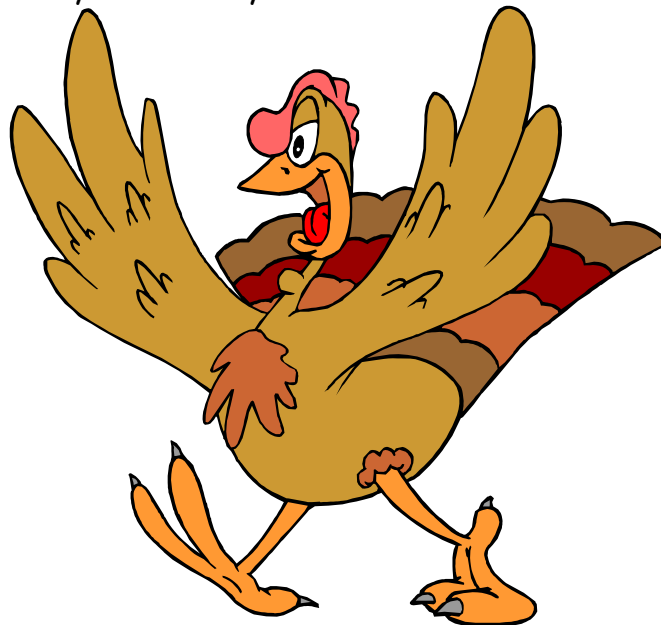


# Jim The Thanksgiving Turkey

Written by:  
Sadie Guimond  
&  
Jason Libby

Rules by:  
J. Parker

The Basic System© Dilly Green Bean Games 2003-2004



Welcome to the Thanksgiving TBS Kids PDF! It's holiday times so what better way to celebrate than a little Role-playing game adventure for your children. You will need the TBS Kids rules off of the Dilly Green Bean Games website.

## Intro

Once upon a time there was a turkey named Jim. He was a bright turkey who was filled with joy. Jim lived on a farm with all his barnyard playmates. Then one day Farmer Ben took Jim away. The poor turkey went for a long ride with other turkeys to a large place with lots of buildings. Jim was amazed at what he was seeing. What was this place?

"Golly me!" cried out another turkey, "It's Thanksgiving! We're doomed!"

"Thanksgiving?" Jim asked.

"It's when we land on someone's table for dinner." Another turkey explained.

"Oh, that's not good." Jim didn't like the sound of that and jumped from the truck.

When Farmer Ben reached his destination he realized that Jim was gone. A man in a black suit came up to Ben and asked what was wrong. "My darn turkey escaped. We've got to find him!"

## The Adventure: The Search for Jim, the Thanksgiving Turkey

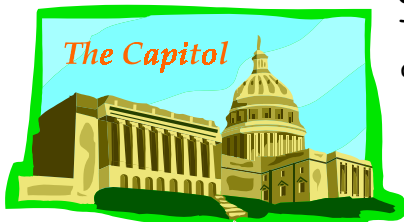
**Teachers:** The objective here is for children to find Jim the Thanksgiving Turkey. What is really going on is Jim is going to the White House for his pardon. Jim doesn't know this. So breathe easy, no eating turkeys here. So how do you approach this scenario? It goes like this: The Secret Service has asked the children to find Jim who is somewhere in Washington, DC. We have included a list of landmarks and pictures to help inspire you. **Read the following to your players:**

"Ok kids. Looks like Jim the Turkey has run away. He is somewhere in our nation's capital. What you need to do is search for him so he may be pardoned by the President. Pardoned means he gets to go free, but Jim thinks he's going to be eaten. Keep this in mind, ok?"

## Creating Characters

Go ahead and use the regular rules for creating characters. Make sure that the kids use real world characters, not superheroes. Have the kids be part of the festivities at the White House.

## Locations of Interest



### Capital Building

This is where Congress meets and conducts business. It is located on the east end of the Mall. Construction of the building started in 1792, and its design was modified several times, until it was finished in 1865. The Capitol's most recognizable feature is the 180-foot-high cast iron



dome of the Great Rotunda. In addition to its historical association, the Capitol Building is also a vast artistic treasure house. The works of such famous artists as Gilbert Stuart, Rembrandt Peale and John Trumbull are displayed on the walls. The Great Rotunda is decorated with a massive fresco by Constantino Brumidi. A monorail subway joins the House and Senate wings of the Capitol with the Congressional office buildings.<sup>1</sup>



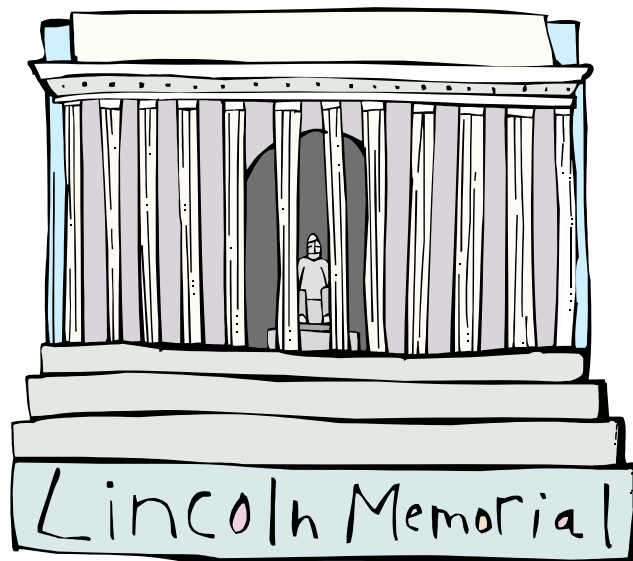
### **Jefferson Memorial**

In 1934, Congress authorized the construction of a memorial to honor Thomas Jefferson, the third President of the United States. He is considered the political philosopher of the American Revolution. He also drafted the Declaration of Independence. Architect John Russell Pope, who designed the memorial, used some of Jefferson's own architectural preferences in his design. The memorial, like Jefferson's home in Monticello, is based on the Roman Pantheon.

Construction of the circular marble building was finished in 1943. It is located near the Potomac River and overlooks the Tidal Basin, which is surrounded by Japanese flowering cherry trees.<sup>2</sup>

### **Lincoln Memorial**

Construction of this memorial to the 16th President of the United States started in 1914 and was completed in 1922. It is located on the west end of the Mall. Architect Henry Bacon modeled the marble, granite and limestone building after the Greek Parthenon. The inside of the memorial is divided into three chambers: central, north and south. A white marble statue of President Lincoln sits in the central chamber. The Gettysburg Address, which Lincoln gave on November 19, 1863, at Gettysburg, Pennsylvania, is in the south chamber, and his second inaugural speech is in the north chamber. The 36 Doric columns on the outside of the memorial represent the number of states in the Union at the time of Lincoln's death in 1865.<sup>3</sup>



### **National Archives**

The National Archives is the official library where the records of the three branches of the U.S. government are kept and preserved. The Declaration of Independence, the Constitution and the Bill of Rights are on display here. A collection of pictures taken during the Civil War by the famous photographer Matthew Brady are also on display. The building is located on Constitution Avenue in Washington, D.C. The agency was created in 1934 and the building was completed in 1935.<sup>4</sup>

### **National Mall**

No, this isn't the official shopping center of the United States. It is a 146-acre stretch of lawn that extends from the Potomac River to the Capitol Building. The area hosts political rallies, festivals and other events. Many of Washington's famous memorials and the Smithsonian's museums and galleries surround the Mall. The National Park Service maintains the grounds.<sup>5</sup>

### **Smithsonian Institution**

A rich English researcher, James Smithson, left all his money to create a museum in Washington, D.C. to "the increase and diffusion of knowledge." And he never even visited the United States! He also left his scientific library and his collection of minerals for the new museum. The Smithsonian is not just one building. It is a network of museums and art galleries, research projects and special performances. It includes 14 museums. Some of them are the National Air and Space Museum, the Museum of Natural History and the National Portrait Gallery.<sup>6</sup>

### **Vietnam Veteran's Memorial**

This memorial to the men and women who died in the Vietnam War also serves to remind the people who didn't agree with the United States' participation in the unpopular war that thousands of Americans lost their lives in the jungles of Vietnam. Congress authorized the memorial in 1980, and more than 1,400 people submitted design ideas for the memorial. A 21-year-old Yale University student, Maya Lin, won the contest. The V-shaped memorial is made of black granite. The names of more than 58,000 veterans who lost their lives in the war are etched in the wall.<sup>7</sup>



### **Washington Monument**

Construction of this magnificent Washington, D.C., monument took nearly a century of planning, building and controversy. The first plans, which were dropped, called for a large equestrian statue of George Washington. After Washington's death in 1797, a memorial was discussed, only to be delayed again. Finally, in 1848, work started on the monument that stands today. After more fits and starts, the monument was finished in 1884 and opened to the public in 1888. The tapered shaft, or obelisk, is made of stone and is covered with white marble. The monument stands just

over 555 feet. Memorial stones from the 50 States, foreign countries and organizations line the inside walls. The top of the monument, which you can get to only by elevator, provides a panoramic view of the city.<sup>8</sup>



### **The White House**

The 132-room White House is the official residence of the president. It is located at 1600 Pennsylvania Avenue. President George Washington chose the site in 1792 and supervised construction. The architect was James Hoban. The mansion was not finished until 1800, so Washington is the only president who never lived in the White House. The British burned the building in 1814, during the War of 1812. The rooms for public functions are on the first floor. The second and third floors are used as the residence of the president and first family.

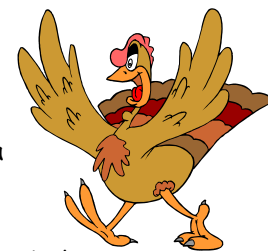
The most celebrated public room is the East Room, where formal receptions take place. Other public rooms are the Red Room, the Green Room and the Blue Room. The State Dining Room is used for formal dinners.<sup>9</sup>

### **World War II Memorial**

The National World War II Memorial commemorates the 16 million Americans who served in the armed forces during the second World War, the more than 400,000 soldiers who died in it, and the millions more who supported the war effort from home. Designed by Friedrich St. Florian, it is located in the National Mall, between the Washington Monument and the Lincoln Memorial. It is the size of a football field, and contains arches, pillars, a wall of stars, fountains, a pool, and many inscriptions. It was authorized in 1993, and dedicated in 2004.<sup>10</sup>

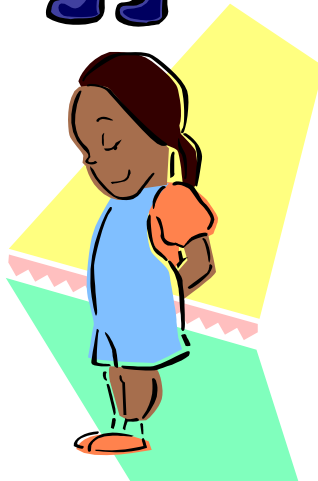
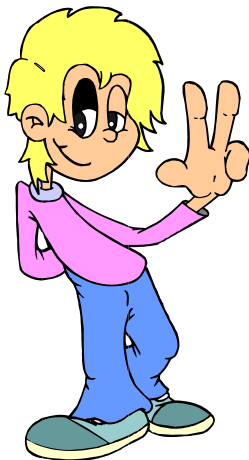
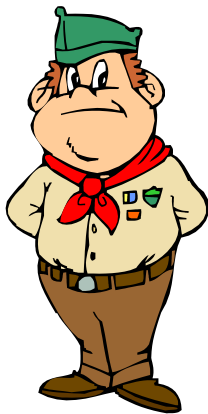
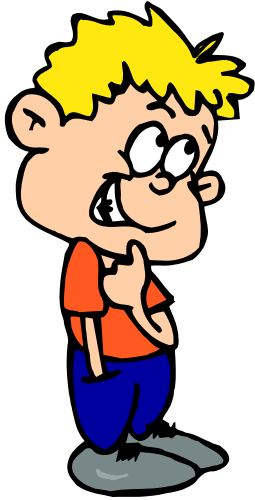
**Teachers:** So after the kids have run around Washington, DC they return to the White House with no Turkey. Have the kids roll their Notice Skill (**BN MSB+ Novice Skill**). The kids need to roll an 8 or higher. If they pass they will hear the sound of a nearby garbage can shaking. If the kids investigate they will find Jim cowering inside. Once he sees people he will jump from the can and make a dash for it. Kids will need to roll to catch Jim. **Difficulty 11 to catch Jim. Kids use their Basic Action + AGI MSB + 1d6.**

Once Jim is caught he is turned over to the Secret Service. Kids watch as Jim begs not to be eaten. The President will come out of a crowd and assure Jim he will be fine.



Read to your players: "Thank you for catching this lucky turkey." The kids watch as the President pardons several turkeys including Jim.

# Kiddy Cut-outs



---

<sup>1</sup> "Infoplease Article."

*Washington, DC Memorials and Landmarks.* \* Fact Monster. © 2000–2004 Pearson Education, publishing as Fact Monster. 24 Nov. 2004 <<http://www.factmonster.com/ipka/A0772993.html>>.

<sup>2</sup> See above

- 
- <sup>3</sup> See above
  - <sup>4</sup> See above
  - <sup>5</sup> See above
  - <sup>6</sup> See above
  - <sup>7</sup> See above
  - <sup>8</sup> See above
  - <sup>9</sup> See above
  - <sup>10</sup> See above

We hope you enjoyed!  
Learn more about TBS at [www.dillygreenbeangames.com](http://www.dillygreenbeangames.com)